



## FRUITY FOLDABLE PLAYPEN

### Enjoying the product?

Tag @pregobabymalaysia  
on Facebook and Instagram  
to share your moments.



## Prego Manufacturing Warranty

Visit [www.pregobaby.com.my/warranty-registration](http://www.pregobaby.com.my/warranty-registration)  
to register your product warranty

### ATTENTION!

We strongly advise you to read all instructions before assembly and use. If you have concern or question, please contact Prego customer service on [www.pregobaby.com.my](http://www.pregobaby.com.my)

### IMPORTANT!

1. Adult assembly required.
2. Please read all instructions before assembly and use of the product.
3. Care should be taken in unpacking and assembly.
4. Examine product frequently for damaged, missing or loose parts.
5. DO NOT use if any parts are missing, damaged or broken.

### WARNING!

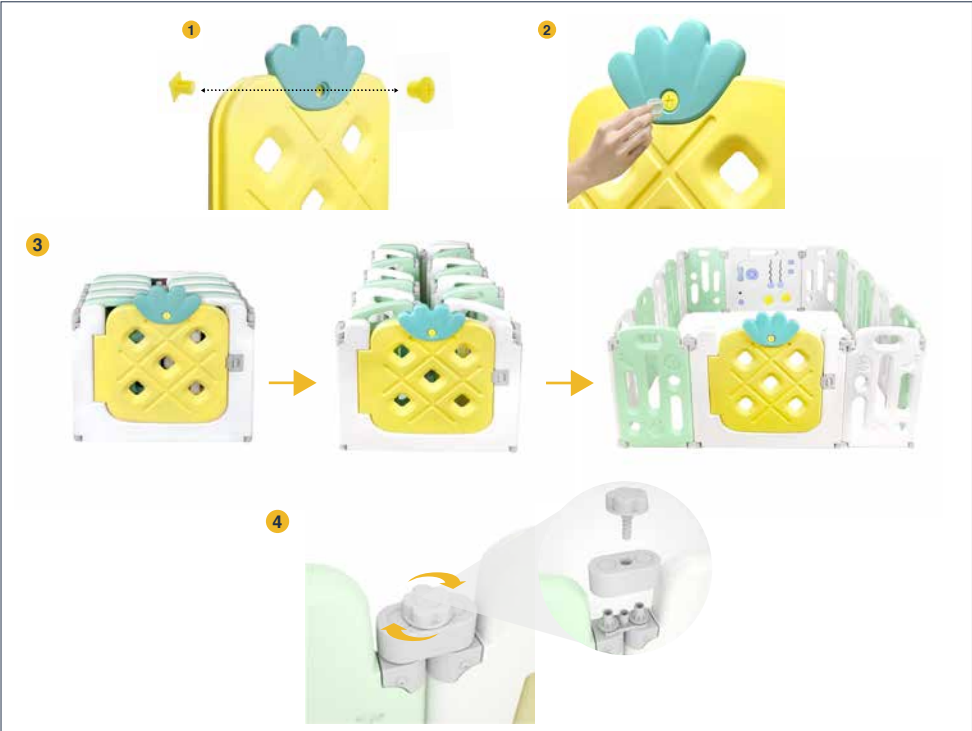
1. Please wipe and clean the playpen with mild soap before use.
2. Keep all children away from the playpen during assembly.
3. Always set up the playpen on a flat, level surface. Check floor/ground surface underneath playpen floor to assure that it is clear of any objects that may injure your child. Ensure surface is suitable for your child to play on.
4. Ensure the playpen is fully erected, and all locking mechanisms engaged before placing your child in this playpen.
5. Make sure all screws are secured.
6. Infants can become trapped and die when improvised netting or covers are placed on top of the playpen. Never add such items to confine a child in the playpen.
7. Always provide the supervision necessary for the continued safety of your child. When used for playing, never leave child unattended.

8. To reduce the risk of SIDS, pediatricians recommend healthy infants be placed on their backs to sleep, unless otherwise advised by your physicians.
9. To avoid strangulation, do not place items with a string around your child's neck, suspend strings from this product, or attach strings to toys.
10. Do not place the product near a window where cords from blinds or drapes can strangle a child.
11. To avoid finger entrapment, use care when folding and unfolding the playpen.
12. To avoid suffocation, remove plastic bag and packaging materials before using this product. The plastic bag and packaging materials should then be kept away from babies and children.
13. Never use the product if there are loose or missing parts or broken parts. Check periodically before use.
14. Never use a water mattress with this product.

## WHAT'S IN THE BOX?



## ASSEMBLY GUIDE



1. Install pineapple crown on the door.
2. Tighten with screwdriver.
3. All the fences are ready installed in the box. Simply take out and expand or change into desired shape.
4. Make sure to check and tighten screws before each use.

## **CARE AND MAINTENANCE**

1. Playpen can be wiped and cleaned with damp cloth and soapy water. Do not use aggressive cleaning agents to clean the playpen.
2. From time to time check your bassinet for loose screws, worn parts, torn material or stitching. Replace or repair the parts as needed.
3. Avoid placing playpen under direct sunlight. Excessive exposure to sun or heat could cause fading or warping of parts.